

Client Services Update



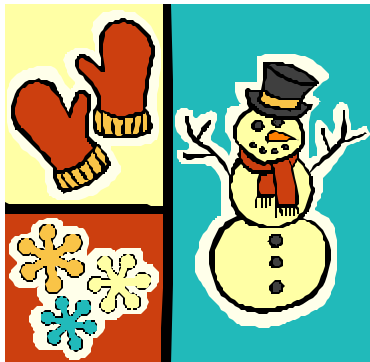
December 2005

THE ROAD TO SAFETY AND COMPLIANCE



Only A Few Weeks Remain for Random Testing 2005
Please have all testing completed by December 23.
 Please contact Fleet Safety if you are in need of cab kits , a collection site location or a reprint of your pick list.

HazMat and Fork Lift Training
 at your terminal,
 at your convenience
 Give us a call for
 more information!
Certified Highway Watch Training Available



Fleet Safety's Offices will be closed on Monday, December 26 and Monday January 2.

Happy Holidays! !

Fleet Safety Services, Inc.
 18 John Street Place
 Worcester, MA 01609

Phone: 508-791-1971
 800-215-2490
 Fax: 508-831-7611

Predicting Truck Crash Involvement

The results of a study done by the American Transportation Research Institute indicate that a driver's past driving behavior is a predictor of future performance - including crash involvement. The three year study included data collected on over a half million drivers using data from MCMIS (Motor Carrier Management Information System) and CDLIS (Commercial Drivers License Information System). "The analysis shows that reckless driving and improper turn violations are the two violations associated with the highest increase in the likelihood of a future crash. The four convictions with the likelihood of a future crash are:

- Improper or erratic lane change
- Failure to yield right of way
- Improper turn
- Failure to maintain proper lane.

When a driver receives a conviction for one of these behaviors, the likelihood of a future crash increases between 91 and 100 percent. The Table below ranks the top 10 driver events by the percentage increase in the likelihood of a future crash." More information on this research is available at www.ATR-ONLINE.ORG.

If A Driver Had:	The Crash Likelihood Increases:
A Reckless Driving Violation	325%
An Improper Turn Violation	105%
An Improper or Erratic Lane Change Conviction	100%
A Failure to Yield Right of Way Conviction	97%
An Improper Turn Conviction	94%
A Failure to Maintain Proper Lane Conviction	91%
A Past Crash	87%
An Improper Lane Change Violation	78%
A Failure to Yield Right of Way Violation	70%
A Driving Too Fast For Conditions Violation	62%